

# NT1 5TH GENERATION

STUDIO CONDENSER MICROPHONE

---

32-BIT FLOAT GUIDE | STUDIO ONE 6 | MAC

## STEP 1

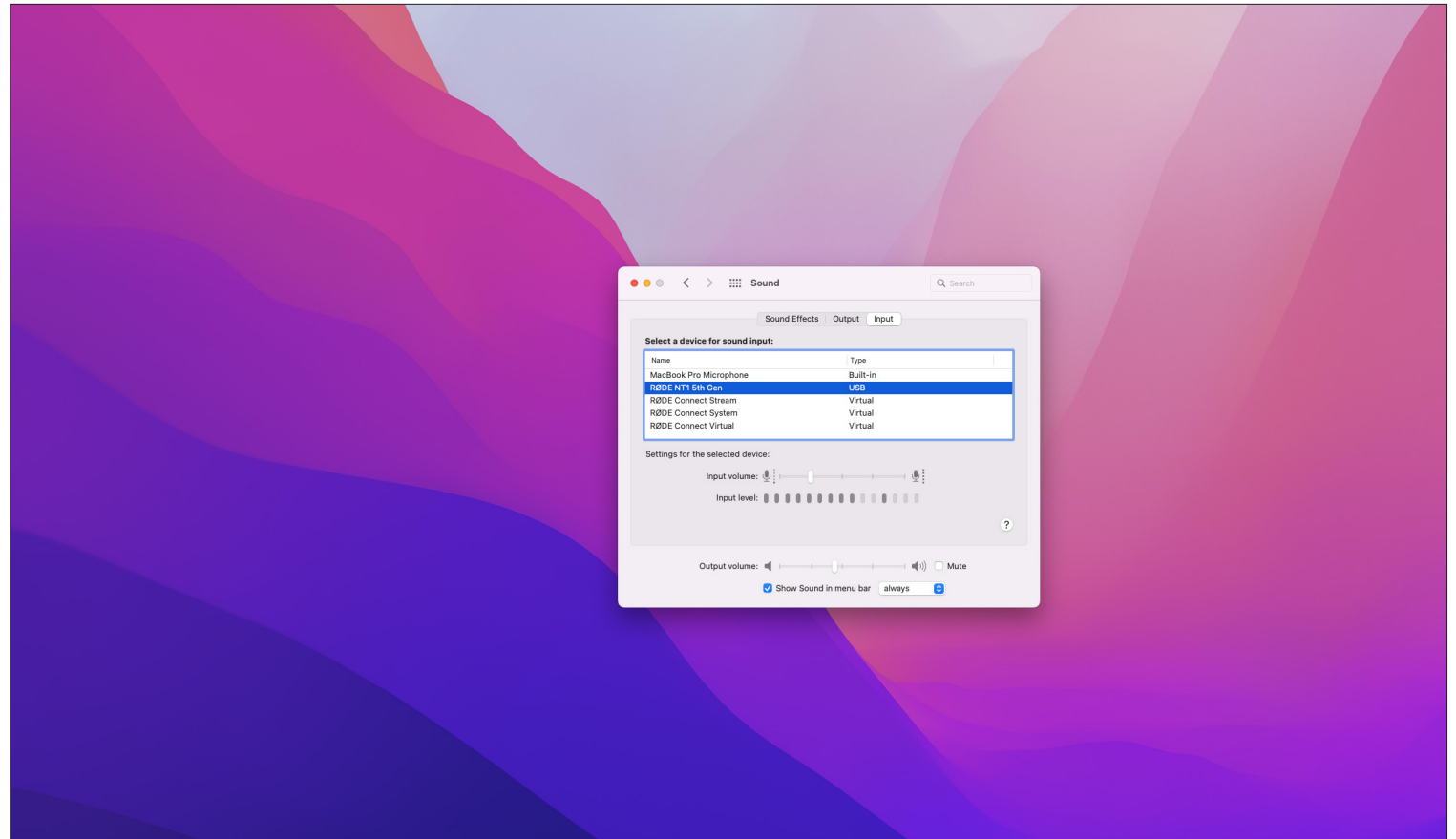
Connect your NT1 5th Generation to your computer via the included USB-C to USB-C cable. If your computer doesn't have a USB-C port, you'll need to use a USB-A to USB-C cable such as the SC18 instead.



## STEP 2

Access your sound settings by navigating to 'System Preferences' > 'Sound' > 'Input' and select 'RØDE NT1 5th Gen'. You can also access this settings panel by clicking the speaker icon in your toolbar and selecting 'Sound Preferences'.

- a. Increase the volume slider until the 'Input Level' meter is getting to around 75% full when you're playing or performing the loudest sound.

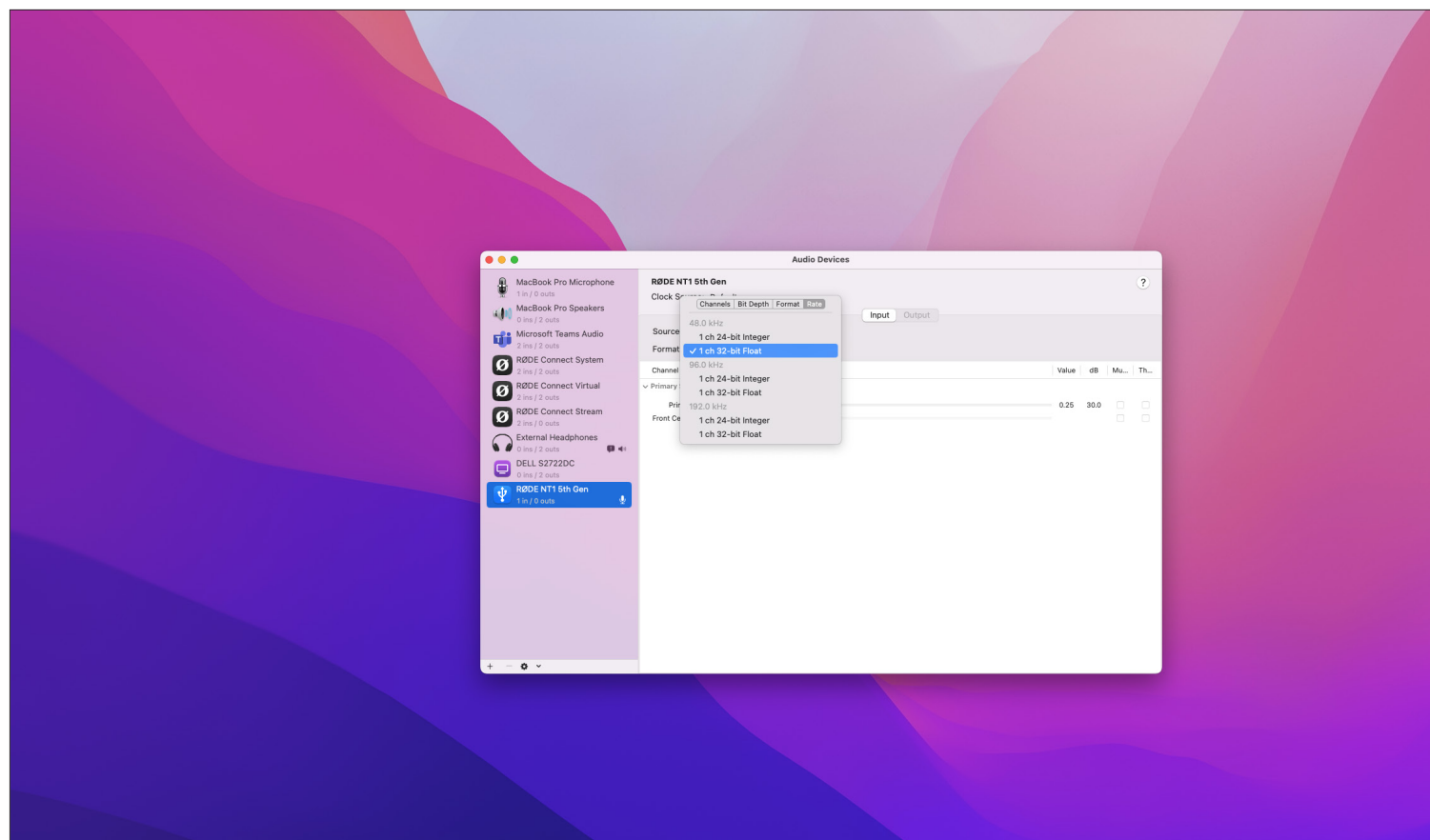


### STEP 3

Navigate to 'Applications' > 'Utilities' > 'Audio MIDI Setup' and select 'RØDE NT1 5th Gen'. You'll notice the volume slider here under 'Primary' will reflect the 'Input Level' we set in the previous step.

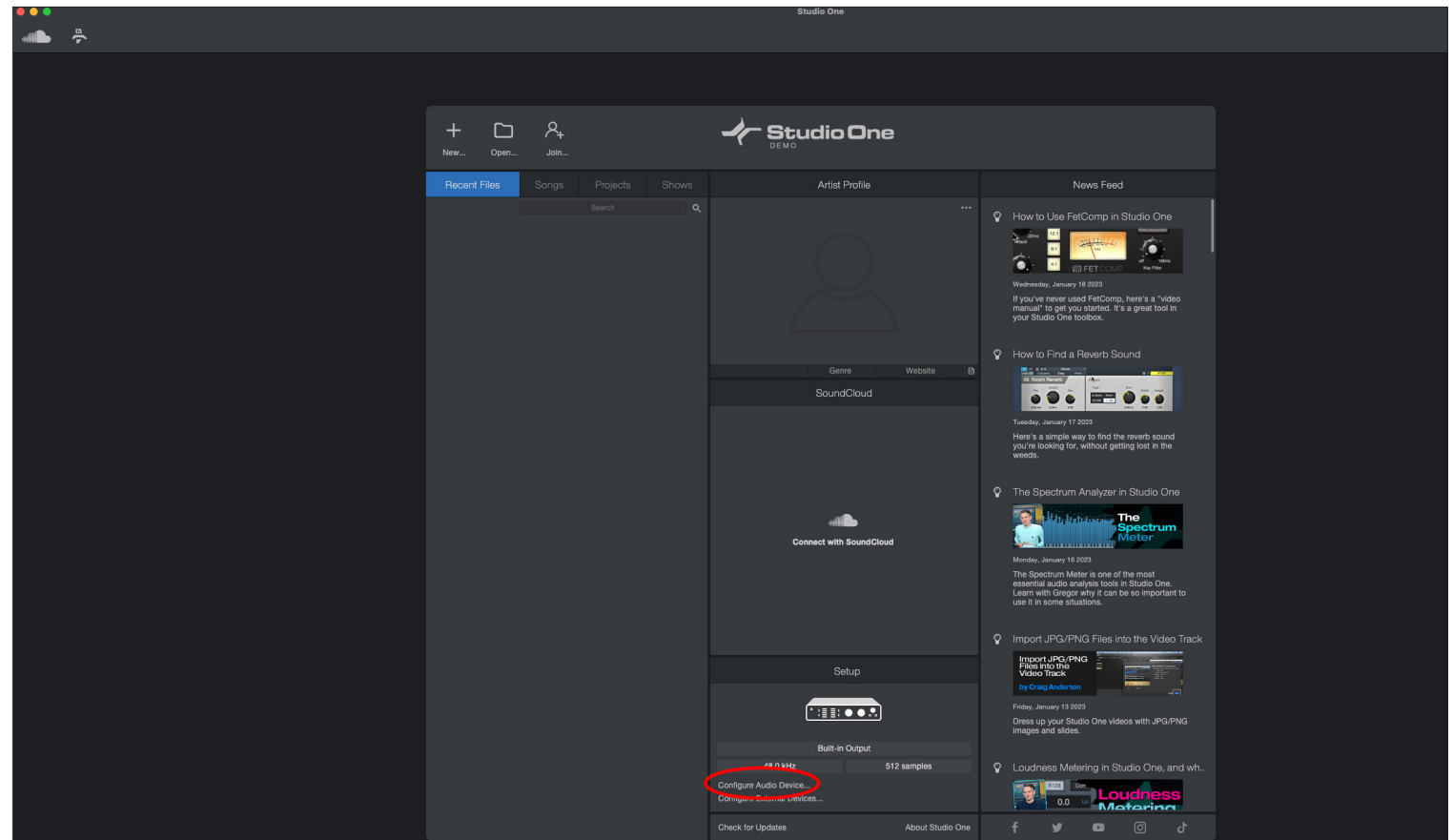
- a. Click the 'Format' dropdown in order to select the sample rate and bit-depth for your NT1 5th Gen input. We recommend selecting 48kHz / 32-bit float.

**NOTE:** You can select up to 192kHz/32-bit, but most computers (including Apple MacBooks and most Windows laptops) have integrated sound cards that can't play back sample rates higher than 96kHz (for modern MacBook Pro laptops) or 48kHz. This means that your audio will still be recorded at this incredibly high sample rate into your DAW, but you will not be able to monitor or play back this audio via headphones plugged into your device. We suggest recording at a standard 48Khz, unless your project specifically requires a higher sample rate.



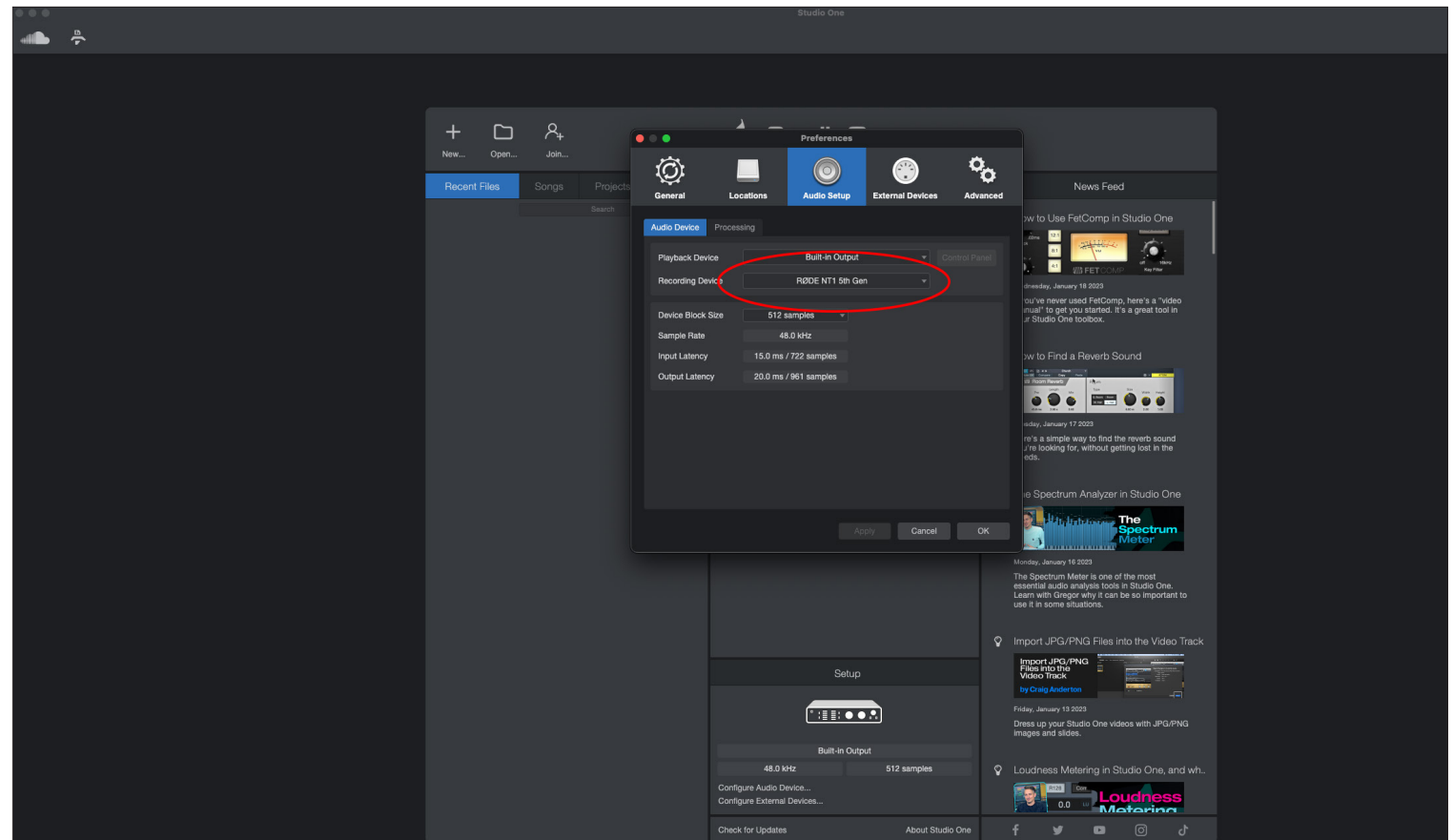
## STEP 4

Open Studio One and click 'Configure Audio Device' from the startup dialog box.



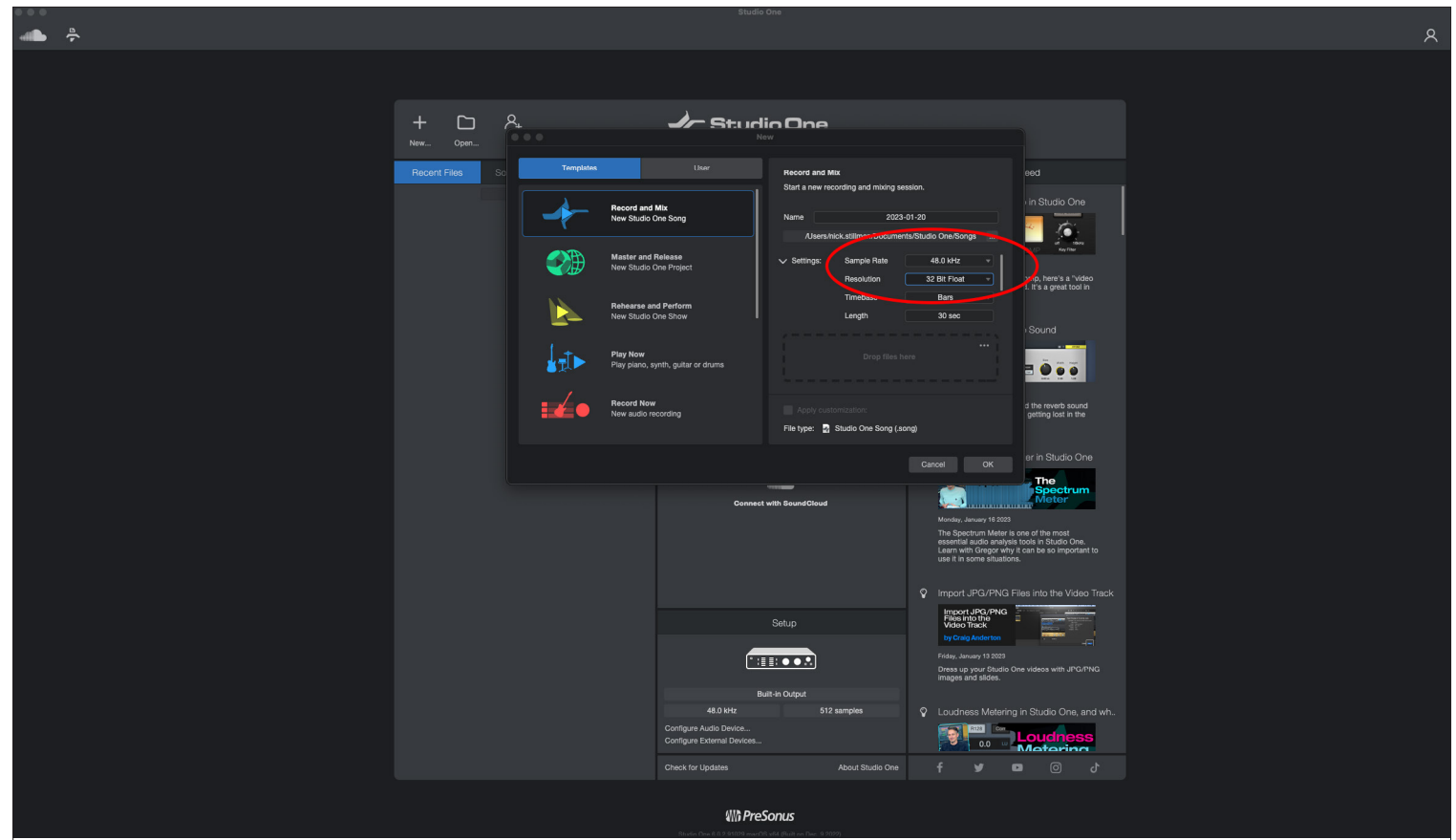
## STEP 4 CONTINUED

- a. Click the 'Recording Device' drop-down and select 'RØDE NT1 5th Gen'. Click 'OK', then click 'New'.



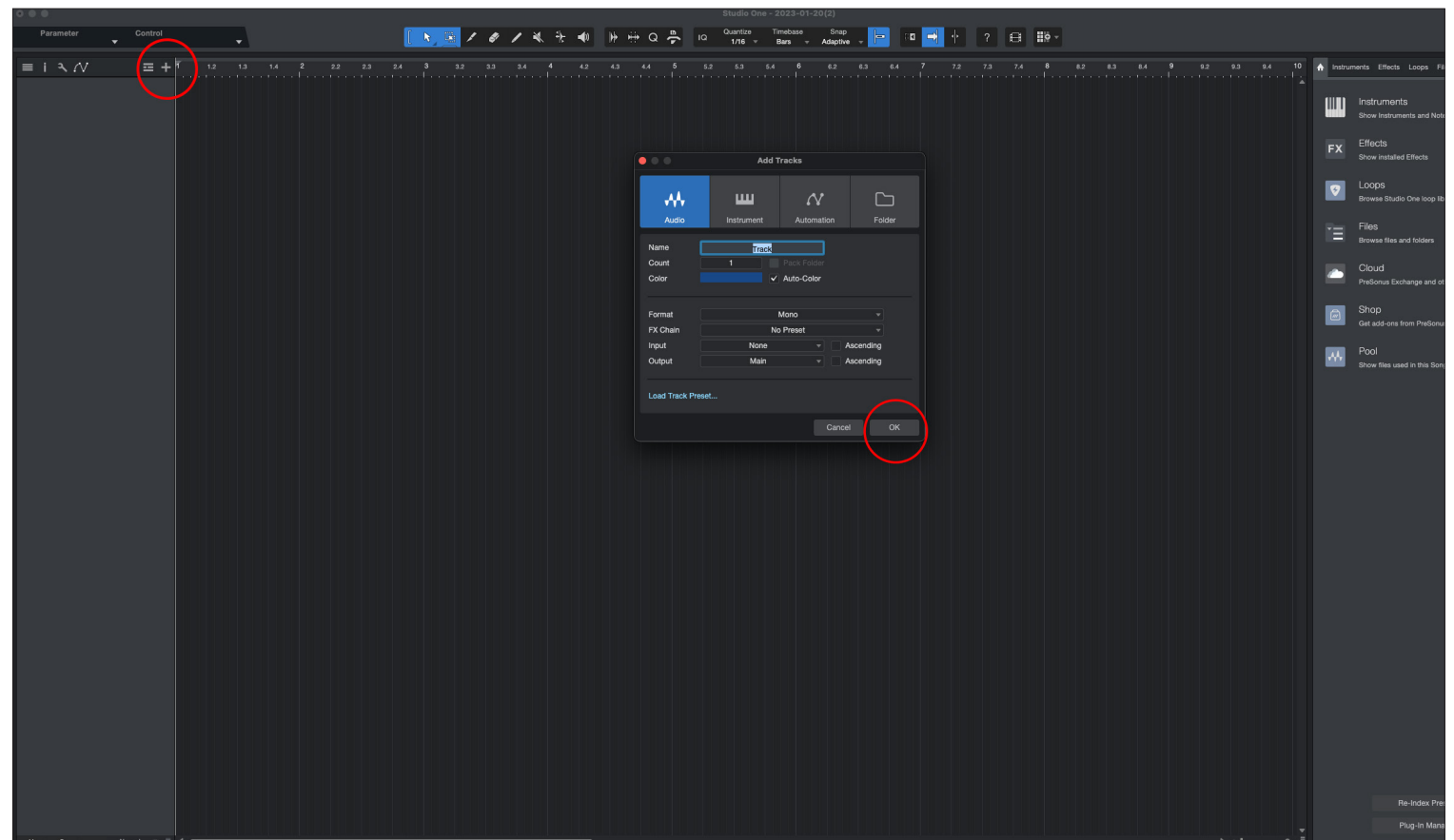
## STEP 5

From the session setup screen, click 'Record and Mix' from the left menu, then click 'Settings' and ensure the Sample Rate is set to the same setting that you selected in the 'Audio MIDI Setup' (i.e., 48Khz) and the Resolution is set to '32 Bit Float'. Adjust other settings as required, then click 'OK'.



## STEP 6

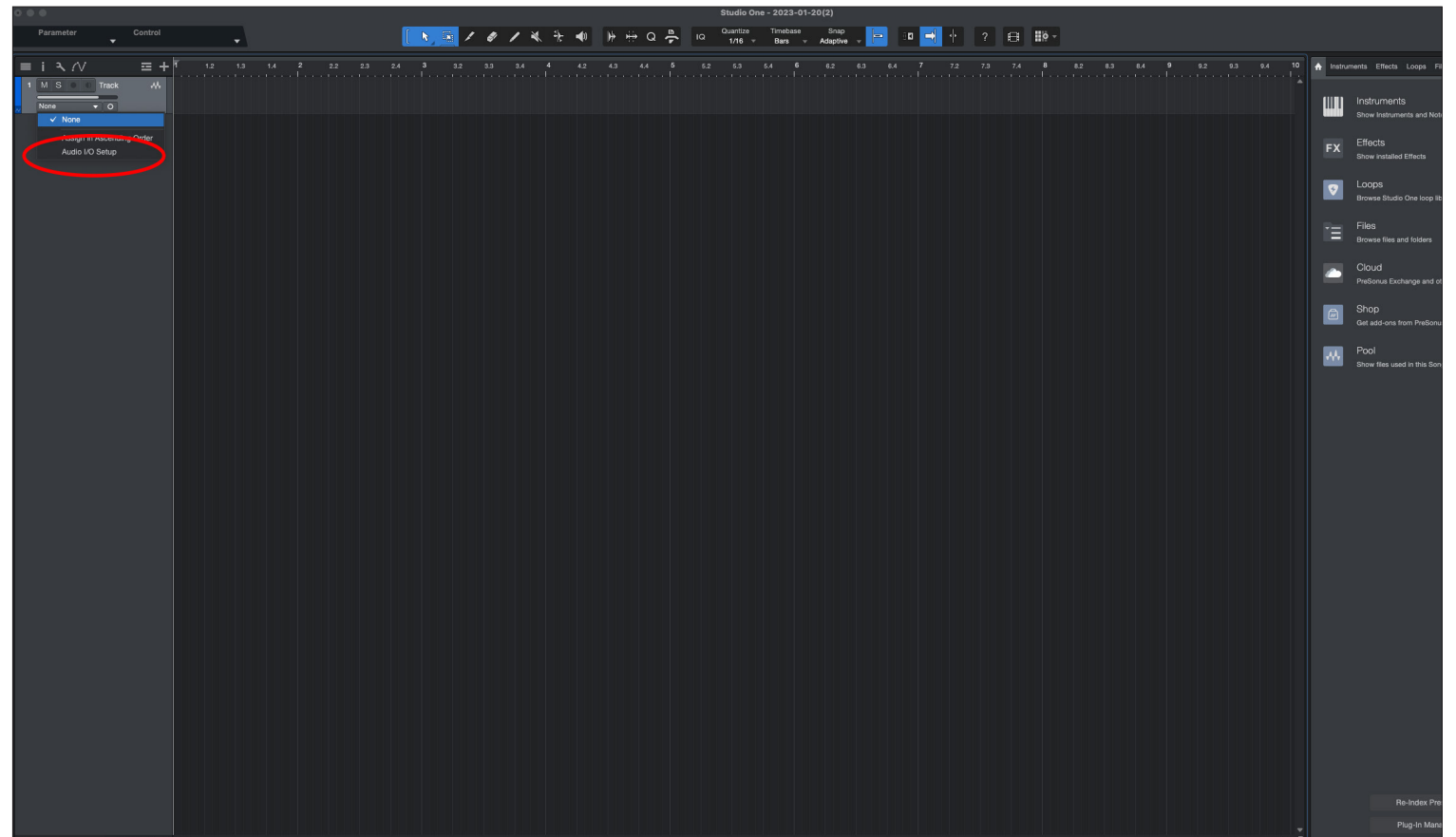
Click the '+' button to create a new audio track and adjust settings as required, then click 'OK'.





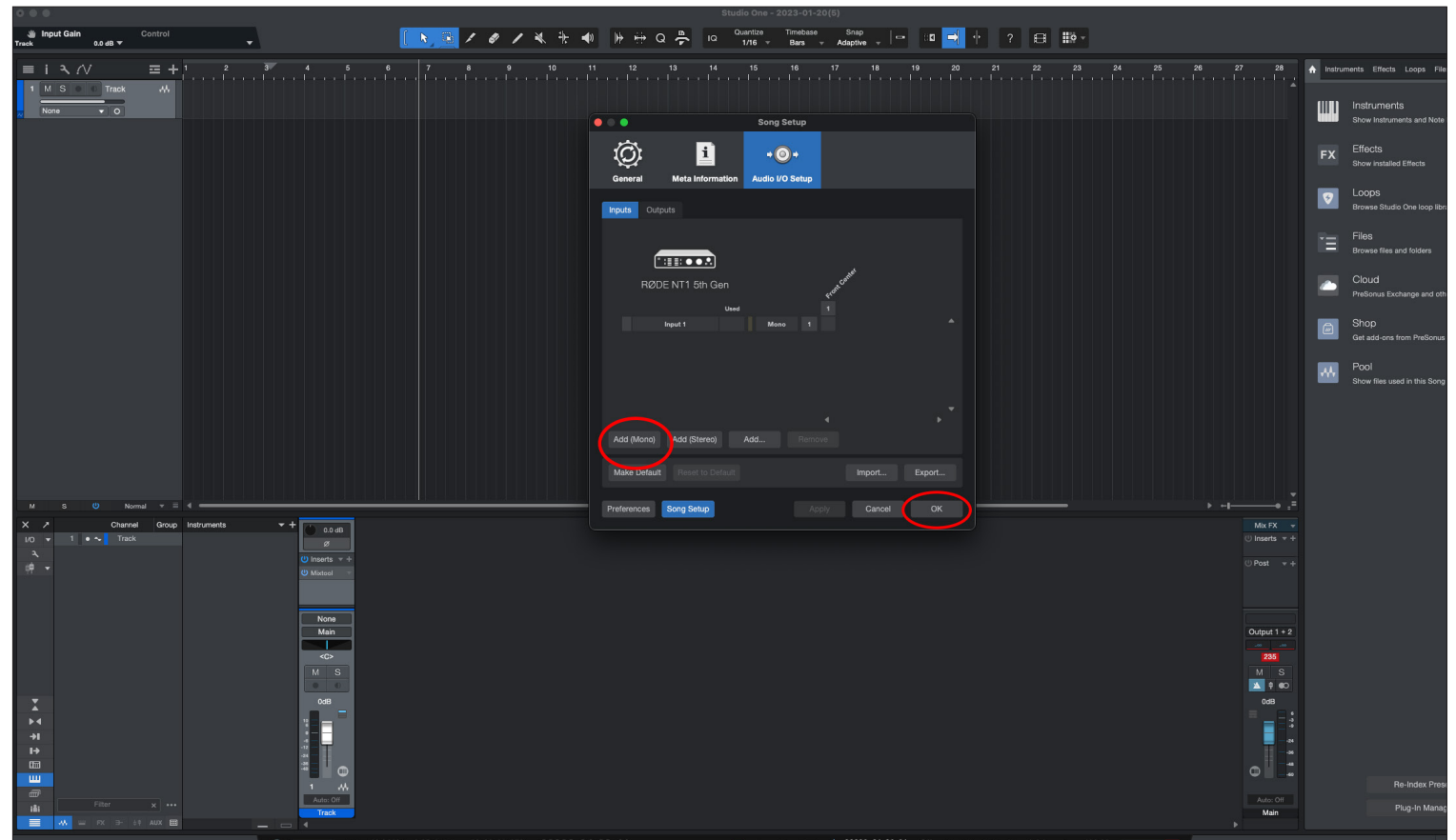
## STEP 7

Click the input selector drop-down on the track header, then click 'Audio I/O Setup'.



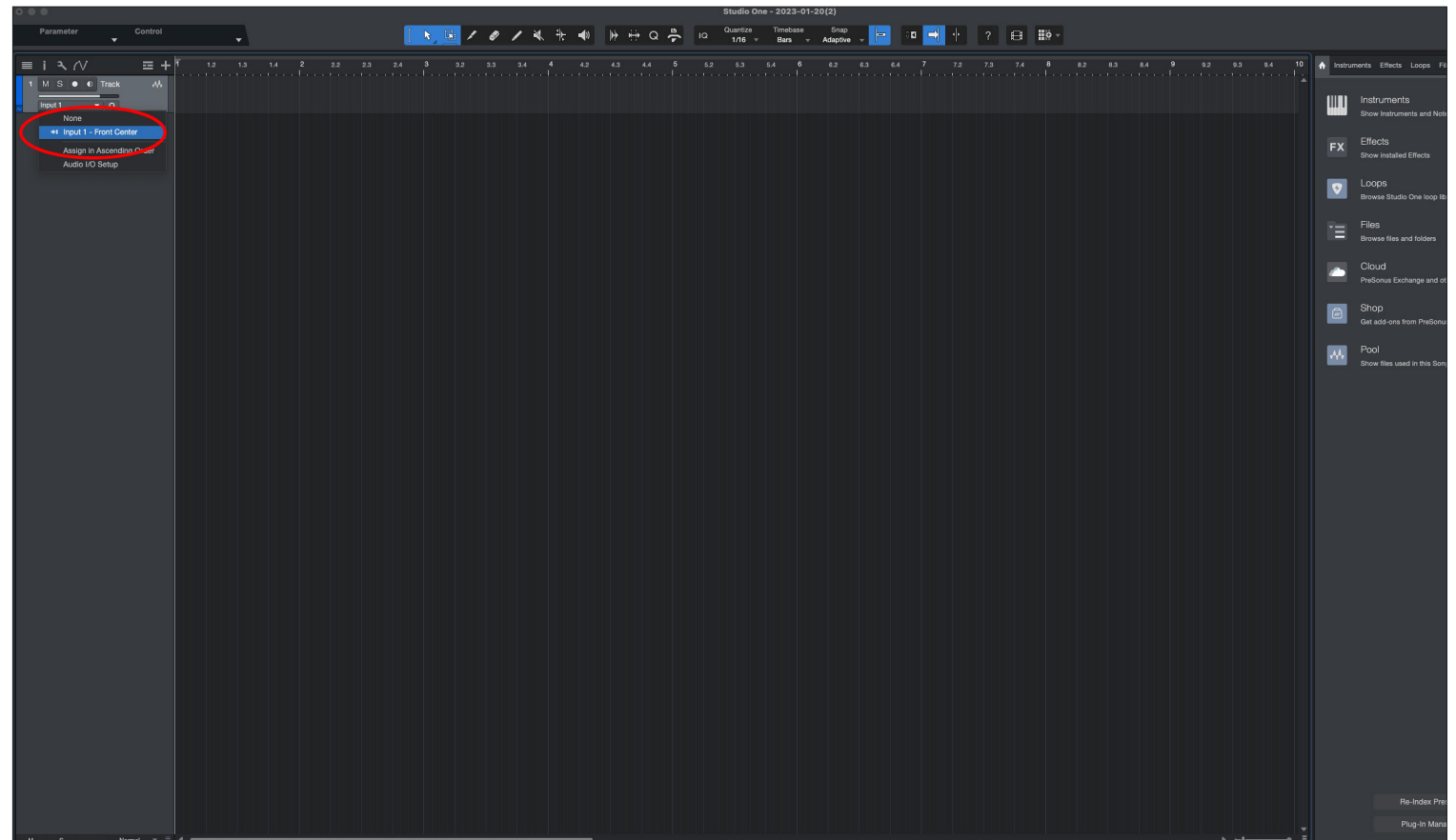
## STEP 7 CONTINUED

- a. In the 'Audio I/O Setup' screen, click 'Add (Mono)', then click 'OK'.



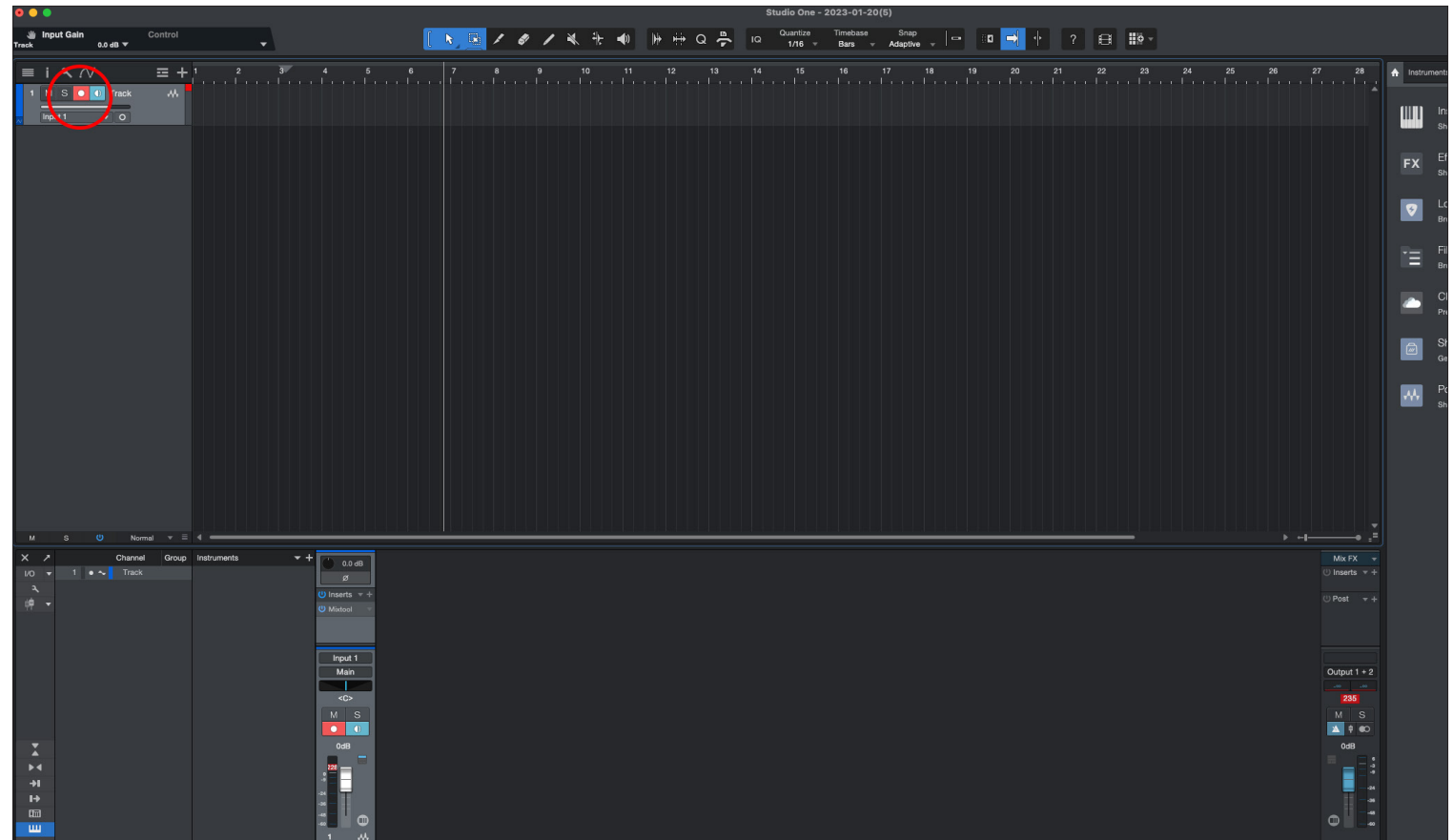
## STEP 7 CONTINUED

- b. Click the input selector drop-down on the track header again and select 'Input 1' to select the NT1 as the track input source.



## STEP 8

Click the circle button to arm the track for recording. Once armed, you will see audio levels jumping on the track. If you need to adjust your mic input level, do so in the Audio MIDI Settings for the NT1 5th Gen. When ready, click the record button from the bottom control panel. Click again to stop recording.



## STEP 9

If your audio clipped while recording, rather than having to re-record the track, you can simply adjust it afterwards to the appropriate level. To do this, navigate to the track, click and drag the square icon in the middle of the track to until you no longer hear the track clipping (note: if you reduce the gain so that the audio is no longer clipping, the waveform will not change, so it will still appear clipped).

**NOTE:** This post-recording gain adjustment can also be applied to tracks that are too quiet by following the same process.

